

Percival Land & Timber Consultants
Contact: Tom Percival
1901 N. Barker Street
Lumberton, NC 28359
Office: 910-738-7170
Cell: 910-734-6699
Tom@landsofthecarolinas.com



K.A. Richardson Company
Kenneth A. Richardson, ALC
102 E. Elizabethtown Road
Lumberton, NC 28359
Office: 910-739-0040
Cell: 910-734-9700
Kenny@landsofthecarolinas.com

162 Acre Townsend Farm

The 162 Acre Townsend Farm which has been under the same family ownership for several generations is being presented for sale for the first time. With a total land area of 162 acres as reported by the Robeson County Tax Office with 87.5 acres of cropland confirmed by FSA this is an excellent tract to expand ones current farming operation. A bonus with this tract is an excellent stand of mixed hardwood and pine timber. No improvements are located on this site.

County: Robeson

Size: 162 Acres

Zoning: RA - Rural Agricultural

Types or Uses: Agricultural, residential, recreational

Terrain: flat to slightly rolling

Access: Approximately 0.55 mile along the southern side of South Robeson School Road and 0.54 mile along the northern side of South Robeson School Road. This tract also has control of access frontage along the northwest side of I-95.

Tax ID #260201001

Available Utilities & Services: electricity

Location: McDonald

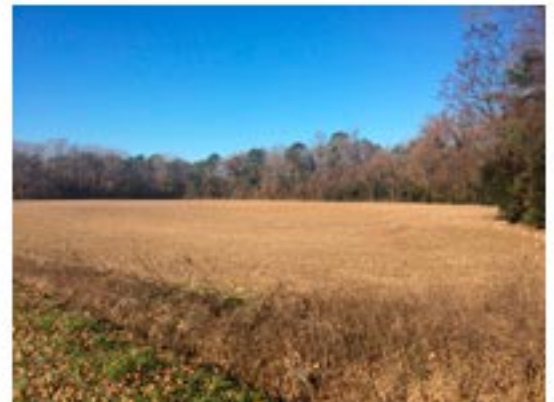
Price: \$515,000 (\$3,179/acre)

Directions: I-95 South to Exit 7, turn right at end on exit ramp and take the first left South Robeson School Road, cross the run of the swamp and the property is on the left and right side.

Latitude: 34.33'3.42

Longitude: -79.12'42.91

Notes: Shown by appointment only



www.LandsOfTheCarolinas.com

