

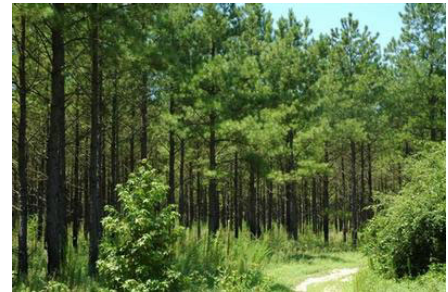
Percival Land & Timber Consultants
Contact: Tom Percival
1901 N. Barker Street
Lumberton, NC 28359
Office: 910-738-7170
Cell: 910-734-6699
Tom@LandsOfTheCarolinas.com



K. A. Richardson Company
Kenneth A. Richardson, ALC
102 E. Elizabethtown Road
Lumberton, NC 28359
Office: 910-739-0040
Cell: 910-734-9700
Kenny@LandsOfTheCarolinas.com

I-95 Commercial Sites in Robeson County, NC

Size: 492.29 acres
Zoning: mixed use
Types or Uses: timber, hunting, development, home site
Terrain: flat
Access: paved road
MLS: Tax ID #180104018
Available Utilities & Services: electricity, telephone, city/county water, septic, cable/Sat TV, cell service
Location: Rennert, Robeson County, NC 28386
Price: \$1,495 per acre (\$735,970)
Directions: 300' from property to Rex Rennert Elementary School, 1.7 miles to Hwy. 17, 11 miles to I-95 and 20 miles to Fayetteville.
Latitude: 34.840048464985877
Longitude: -79.087357521057129
Notes: Will not sub-divide, price reduced, shown by appointment only.



Loblolly Pine.

This tract includes 33 acres of 3 year old planted longleaf pine and 15 acres of 18 year old planted longleaf pine. It also has 116 acres of 23 year old planted loblolly pine. It has a good interior road system and has excellent deer and duck hunting. This tract has great soils for lot perks and construction grade fill dirt. There is demand in the area for mobile home rentals and lot sales.



Duck pond.



3 Yr Longleaf with 25 Yr Loblolly in background.



www.LandsOfTheCarolinas.com



Percival Land & Timber Consultants
Contact: Tom Percival
1901 N. Barker Street
Lumberton, NC 28359
Office: 910-738-7170
Cell: 910-734-6699
Tom@LandsOfTheCarolinas.com



K. A. Richardson Company
Kenneth A. Richardson, ALC
102 E. Elizabethtown Road
Lumberton, NC 28359
Office: 910-739-0040
Cell: 910-734-9700
Kenny@LandsOfTheCarolinas.com

I-95 Commercial Sites in Robeson County, NC



Loblolly Pine near entrance.



3 Year old Longleaf Pine.



Eastern boundary along railroad.



Upland ridge with Loblolly Pine.



Interior road through Loblolly Pine.



Entrance gate and road frontage on Rennert Road.



www.LandsOfTheCarolinas.com

