

Percival Land & Timber Consultants  
Contact: Tom Percival  
1901 N. Barker Street  
Lumberton, NC 28359  
Office: 910-738-7170  
Cell: 910-734-6699  
Tom@LandsOfTheCarolinas.com



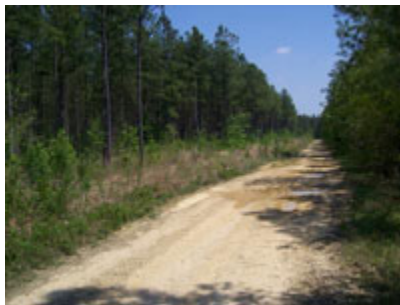
K. A. Richardson Company  
Kenneth A. Richardson, ALC  
102 E. Elizabethtown Road  
Lumberton, NC 28359  
Office: 910-739-0040  
Cell: 910-734-9700  
Kenny@LandsOfTheCarolinas.com

## Timberland Investment Tract in Cumberland County, NC

**Size:** 559.13 acres  
**Zoning:** mixed use  
**Types or Uses:** hunting, development, timber, undeveloped  
**Terrain:** flat  
**Access:** paved road  
**MLS:** Tax ID #0574220429  
**Available utilities & Services:** electricity, telephone, septic, city/county water, cable/Sat TV, and cell service  
**Location:** Linden, Cumberland County, NC 28356  
**Price:** \$3500 per acre (\$1,956,955)  
**Directions:** On McBryde Road 1400 ft to the town of Linden. 10 miles to I-95, 14 miles to Fayetteville, 19 miles to Ft. Bragg, and 40 miles to Raleigh.  
**Latitude:** 32.235384331008682  
**Longitude:** -78.759698867797852  
**Notes:** Will not sub-divide, shown by appointment only



This tract is a beautiful 20 year old loblolly pine plantation with a great interior road system. 40 acres was thinned 5 years ago and now needs a second thinning. The remainder of the tract has never been thinned. This tract has excellent deer hunting.



[www.LandsOfTheCarolinas.com](http://www.LandsOfTheCarolinas.com)

