

Percival Land & Timber Consultants
Contact: Tom Percival
1901 N. Barker Street
Lumberton, NC 28359
Office: 910-738-7170
Cell: 910-734-6699
Tom@LandsOfTheCarolinas.com



K. A. Richardson Company
Kenneth A. Richardson, ALC
102 E. Elizabethtown Road
Lumberton, NC 28359
Office: 910-739-0040
Cell: 910-734-9700
Kenny@LandsOfTheCarolinas.com

Beautiful Mountain Property in Ashe County, NC

Size: 12.10 acres
Zoning: Currently zoned residential
Types or Uses: residential, home site, development, recreational
Terrain: hilly
Access: 1925 gravel road
Available utilities & Services: electricity, telephone, well water, septic, cable TV
Location: Crumpler, Ashe County, NC 28617
Price: \$175,000
Directions: Located in the Hidden Mountain Subdivision on the beautiful New River. Lot numbers are 107, 108, 109, 110, 122, 123 and 124.
Latitude: 36.520621557459080
Longitude: -81.374552249908447
Notes: Will sub-divide, shown by appointment only

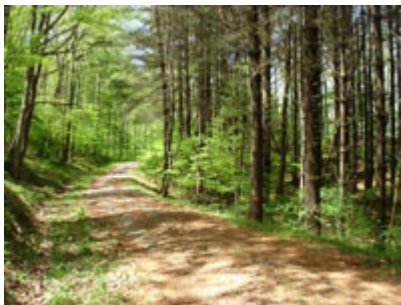


Entrance to Subdivision

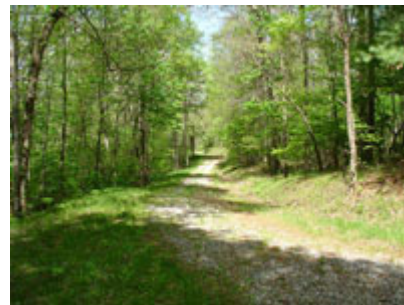


Riverfront Common Areas

Priced for QUICK sale! 12.1 acres (7 lots) in quiet subdivision with a common area and river access. All lots are very buildable, wooded (mature, marketable timber) and 3 have a stream. Other lots in this subdivision start at \$35,000 per acre. Great opportunity to own mountain land or flip for a profit. Won't last long at this price – take advantage of this great investment opportunity. Broker owned.



Lots 109, 110 on right - Lot 124



Lots 122, 123, 124 on left – Lot 110 on right



www.LandsOfTheCarolinas.com



Percival Land & Timber Consultants
Contact: Tom Percival
1901 N. Barker Street
Lumberton, NC 28359
Office: 910-738-7170
Cell: 910-734-6699
Tom@LandsOfTheCarolinas.com



K. A. Richardson Company
Kenneth A. Richardson, ALC
102 E. Elizabethtown Road
Lumberton, NC 28359
Office: 910-739-0040
Cell: 910-734-9700
Kenny@LandsOfTheCarolinas.com

Beautiful Mountain Property in Ashe County, NC



Looking from Lot 124 to Lots 108-110 on left



Front of Lot 107



Front of Lot 108



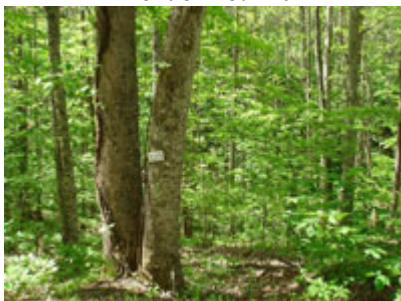
Mature Pine on Lots 106 - 110



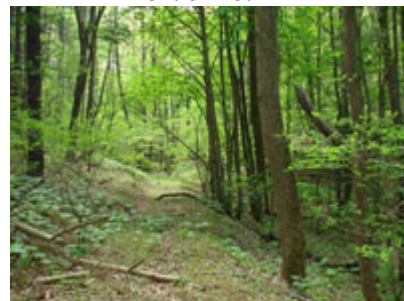
Front of Lot 110



Front of Lot 122



Front of Lot 123



Interior Wood Road on 5.3 acre Lot 124



www.LandsOfTheCarolinas.com

